

Gravity Project

Consensus-driven Data Standards for the Social Determinants of Health

Presenters:

Sarah DeSilvey / Gravity Project Director of Terminology, Gravity Project

Corey Smith / Gravity Project Director of Terminology, Gravity Project



Gravity Overview



A collaborative initiative with the goal to develop consensus-driven data standards to support the collection, use, and exchange of data to address the social determinants of health (SDOH).



An SDOH Lexicon

- **Health Equity:** Health equity is the state in which **everyone** has a fair and just opportunity to attain their highest level of health.
- **Social Determinants of Health (SDOH):** “The conditions in which people are born, grow, live, work and age,” which are “shaped by the distribution of money, power and resources.”

Population
&
Structural-
Level

SDOH can offer both positive and negative forces:

Positive Forces

- **Protective Factors:** Characteristics or strengths of individuals, families, communities or societies that act to mitigate risks and promote positive well-being and healthy development.

Negative Forces

- **Social Risks:** Adverse social conditions associated with poor health.
- **Social Needs:** Patient-prioritized social risks.

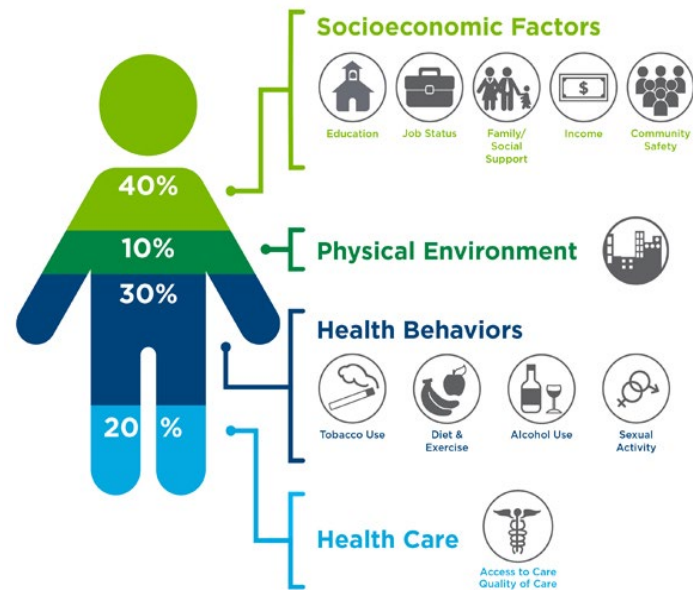


Person-
Level

Why is addressing social needs important?

- Unmet social needs negatively impact **health outcomes**:
 - Social risks such as **food insecurity and homelessness** are associated with increased risk of chronic diseases.
(e.g. hypertension, cancer, asthma, diabetes)
- Unmet social needs negatively impact **health care access**:
 - Social risks such as **transportation insecurity, housing instability, lack of health insurance** are associated with delayed or missed care.

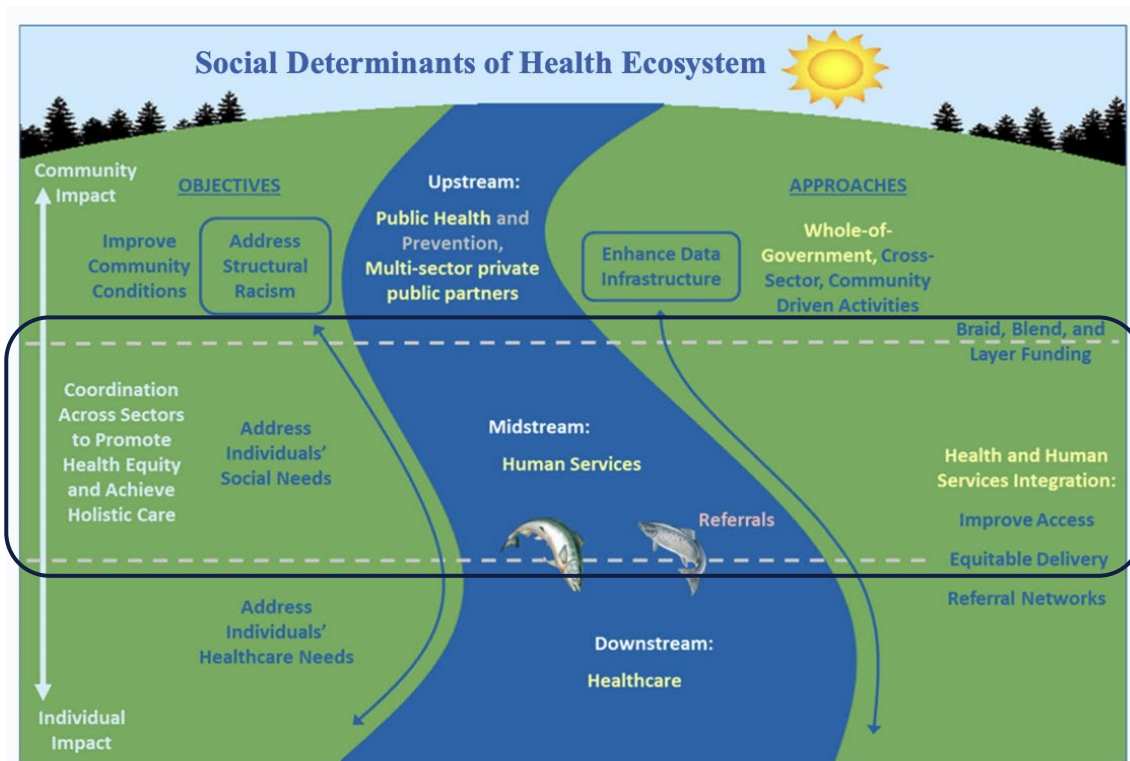
What Goes Into Your Health?



Source: Institute for Clinical Systems Improvement, Going Beyond Clinical Walls: Solving Complex Problems (October 2014)

HHS Strategic Approach to Addressing SDOH to Advance Health Equity

Data standards
(i.e. Gravity) to support
health and human
services integration



2023 Project Sponsors and Partners



Robert Wood Johnson Foundation

★ Founding Sponsors

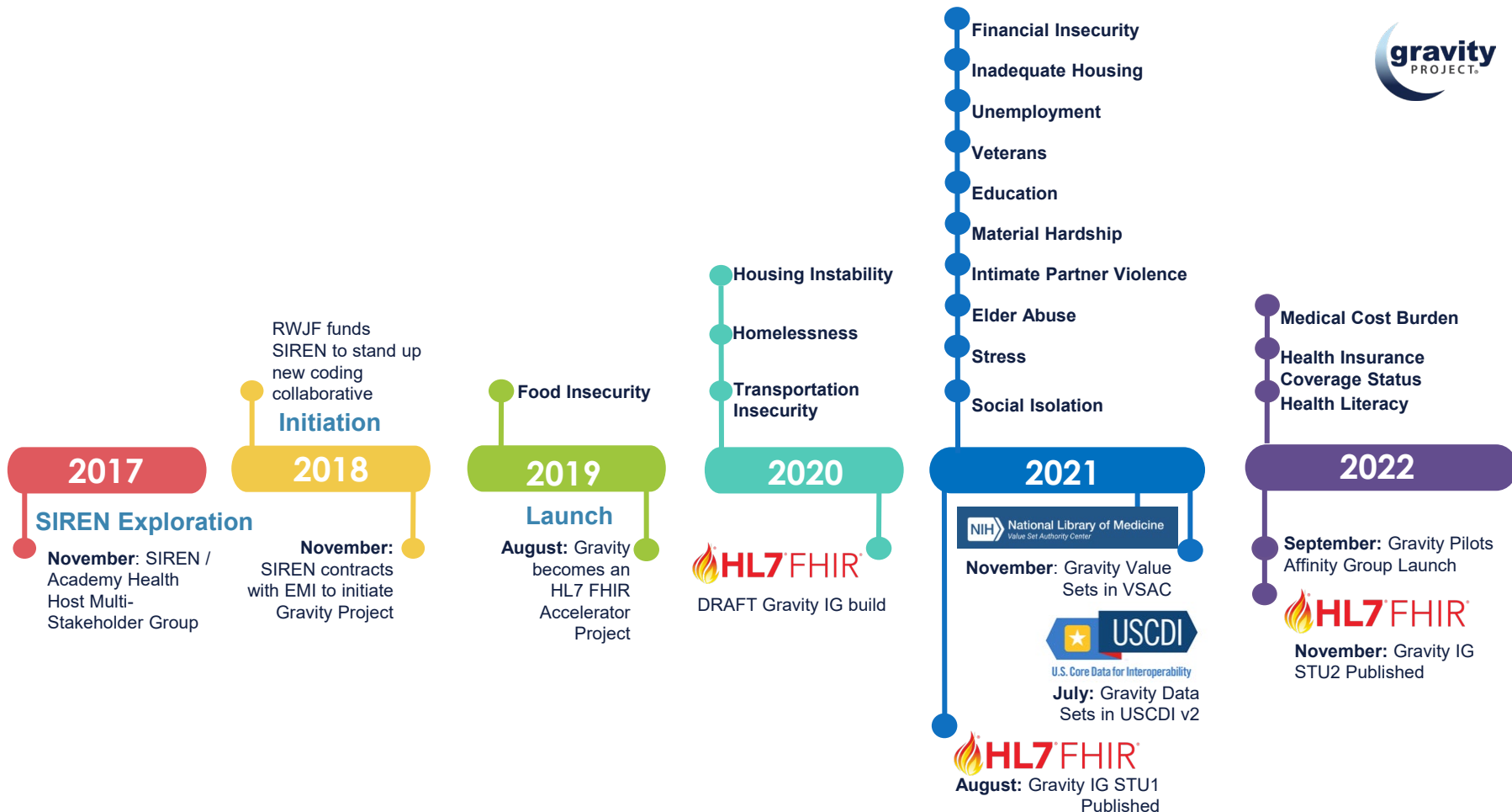
Special thanks to the following for your in-kind contributions to Gravity Project: AMA, Civitas Networks for Health, and Saffron Labs.

Public Collaboration



Gravity convenes over **2,000+** participants from across the health and human services ecosystem to develop and test SDOH data standards.

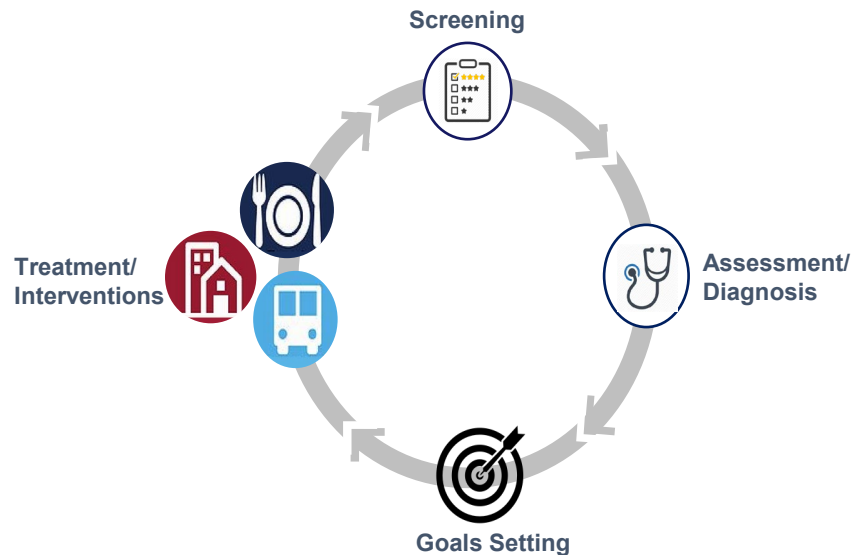




The Importance of SDOH Data Standards

SDOH Data Standards:

- Establish a **shared understanding of critical concepts** across the ecosystem in the name of **health equity**.
- Allow for **data visibility**, a critical aspect of **data justice**.
- Create **common methods for exchanging information** within communities to allow for **analysis and upstream, structural interventions**.



★ Gravity is **AGNOSTIC** to the systems and tools used to collect, exchange, aggregate, and analyze social care data.

Gravity Project Core Use Cases

1. Documenting social care data at patient/client encounters.



**Person-
Level
Activities**

2. Tracking social care interventions to completion.



3. Gathering and aggregating social care data for uses beyond the point of care.

(for purposes of population health, quality reporting, risk stratification, research, and policies to foster health equity)



**Population &
Structural-
Level
Activities**



Gravity Data Use Principles for Equitable Health and Social Care

- Improving Personal Health Outcomes
- Improving Population Health Equity
- Ensuring Personal Control
- Designing Appropriate Solutions
- Ensuring Accountability
- Preventing, Reducing, and Remediating Harm

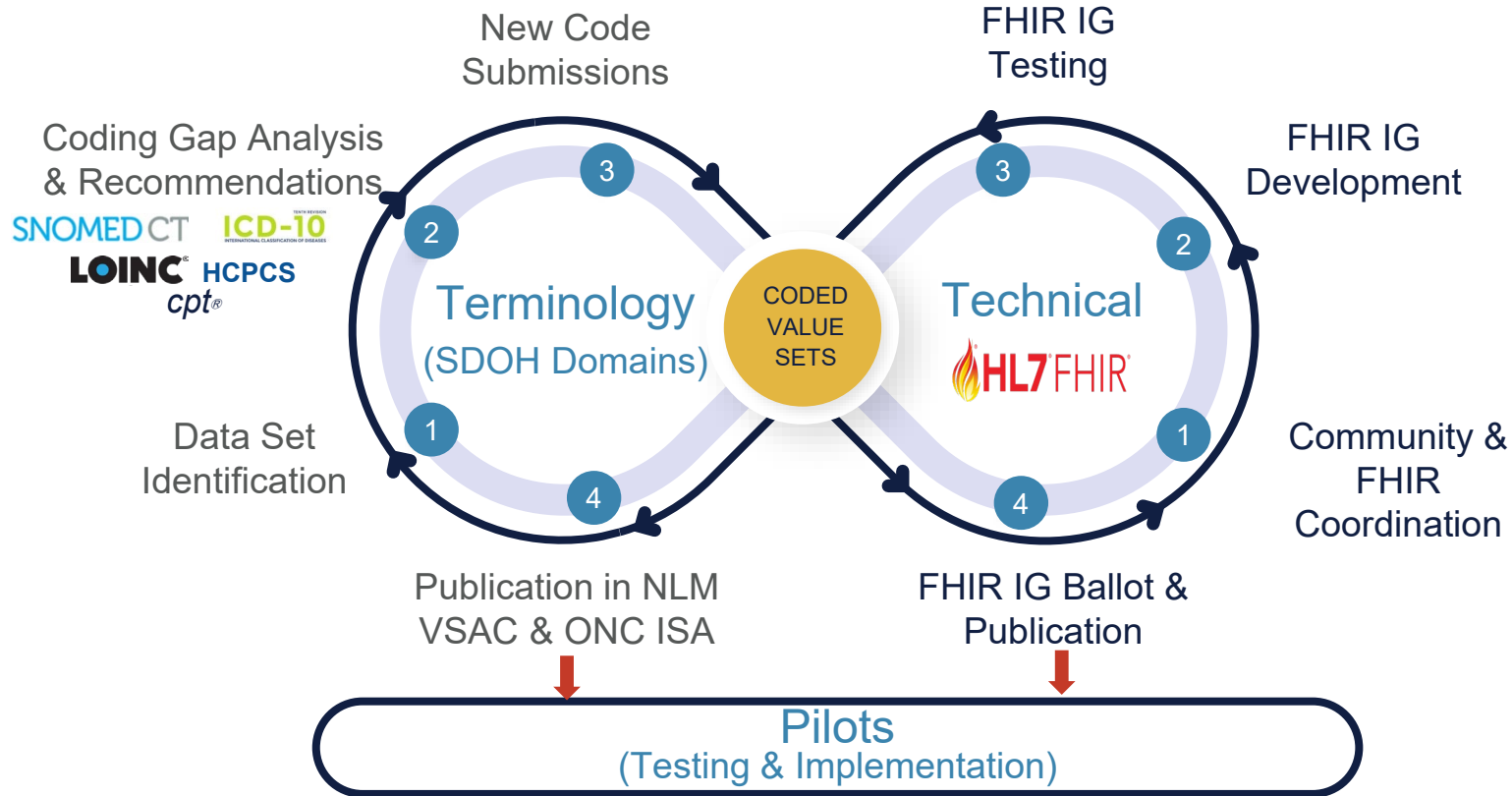


Gravity Data Use Principles are Accessible on the Gravity Project Confluence page.

Gravity Workstreams



3 Workstreams: Terminology, Technical, Pilots



Terminology Workstream — Scope

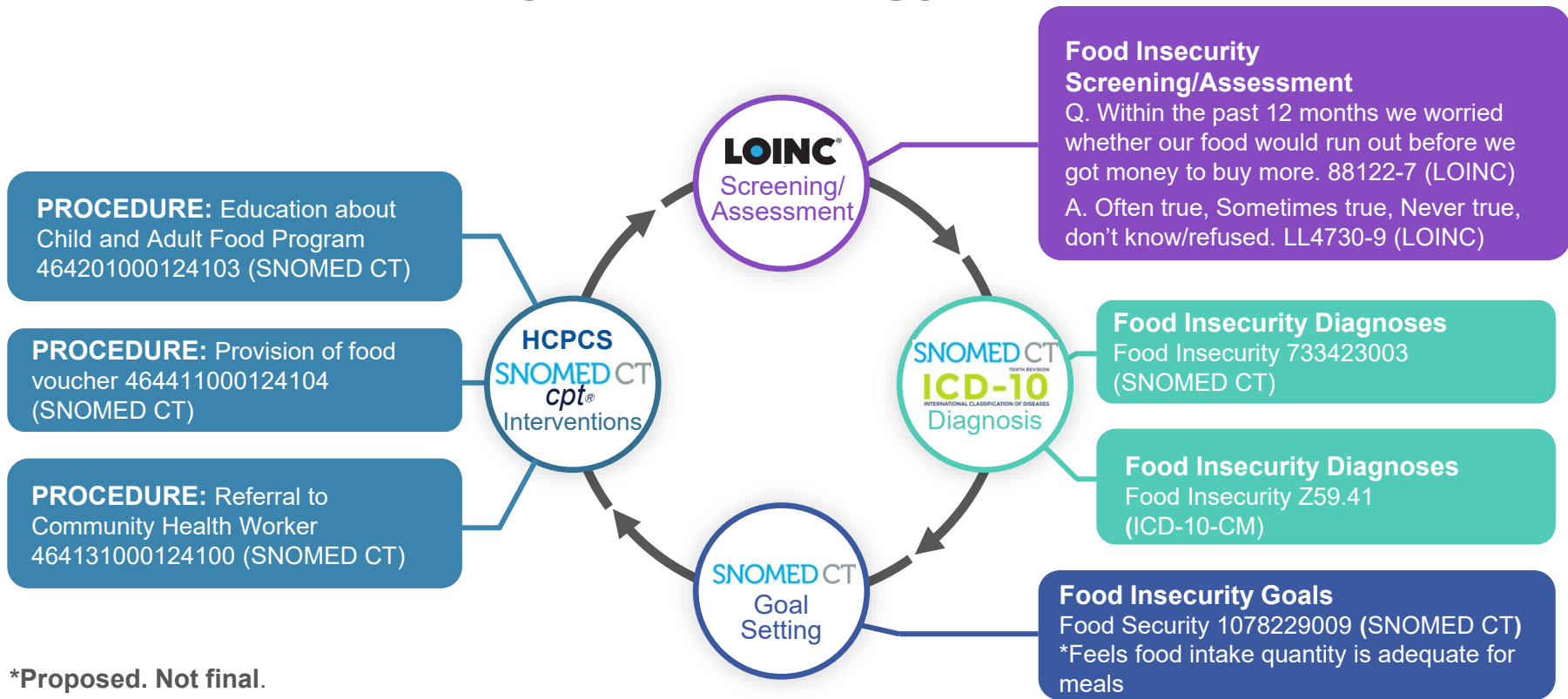
- **Develop data standards** to represent and exchange patient level social risk data documented across four clinical activities:
 - Screening,
 - Assessment/diagnosis,
 - Goal setting, and
 - Intervention/treatment
- **Test and validate** standardized social risk data for use in patient care, care coordination between health and human services sectors, population health management, public health, value-based payment, and clinical research.

SDOH Domains



Domains grounded by those listed in the NASEM [“Capturing Social and Behavioral Domains in Electronic Health Records”](#) 2014



Food Insecurity Terminology Build



*Proposed. Not final.

Gravity Project Value Sets

- Gravity Project stewards over 150 NLM VSAC value sets.
 - Social risk domain level sets for each activity (screening, diagnosis, goal setting, intervention)
 - All SDOH level value sets in line with USCDI
- Domain-level sets can be found in VSAC with Gravity Project as the Steward, or on our Confluence page under “Gravity Terminology Value Sets”
<https://confluence.hl7.org/display/GRAV/Gravity+Terminology+Value+Sets>.

Domain	SDOH Activities	Links to Value Sets in VSAC	Downloadable Assessment Instruments Spreadsheets
	Assessment Instruments Question Codes (LOINC)	Work in progress	Food Insecurity Assessment Instruments Codes V1
	Assessment Instruments Answer Codes (LOINC)	Work in progress	
	Diagnoses (SNOMED CT, ICD-10)	https://vsac.nlm.nih.gov/valueset/2.16.840.1.113762.1.4.1247.17/expansion/latest	
	Goals (SNOMED CT)	https://vsac.nlm.nih.gov/valueset/2.16.840.1.113762.1.4.1247.16/expansion/latest	
	Procedures (SNOMED CT, CPT, HCPCS)	https://vsac.nlm.nih.gov/valueset/2.16.840.1.113762.1.4.1247.7/expansion/latest	
	Service Request (SNOMED CT, CPT, HCPCS)	https://vsac.nlm.nih.gov/valueset/2.16.840.1.113762.1.4.1247.11/expansion/latest	
	Assessment Instruments Codes (LOINC)	Work in progress	Housing Instability Assessment Instruments Codes V1
	Assessment Instruments Answer Codes (LOINC)	Work in progress	
	Diagnoses (SNOMED CT, ICD-10)	https://vsac.nlm.nih.gov/valueset/2.16.840.1.113762.1.4.1247.24/expansion/latest	
	Goals (SNOMED CT)	https://vsac.nlm.nih.gov/valueset/2.16.840.1.113762.1.4.1247.16/expansion/latest	
	Procedures (SNOMED CT, CPT)	https://vsac.nlm.nih.gov/valueset/2.16.840.1.113762.1.4.1247.44/expansion/latest	
	Service Request (SNOMED CT, CPT)	https://vsac.nlm.nih.gov/valueset/2.16.840.1.113762.1.4.1247.45/expansion/latest	

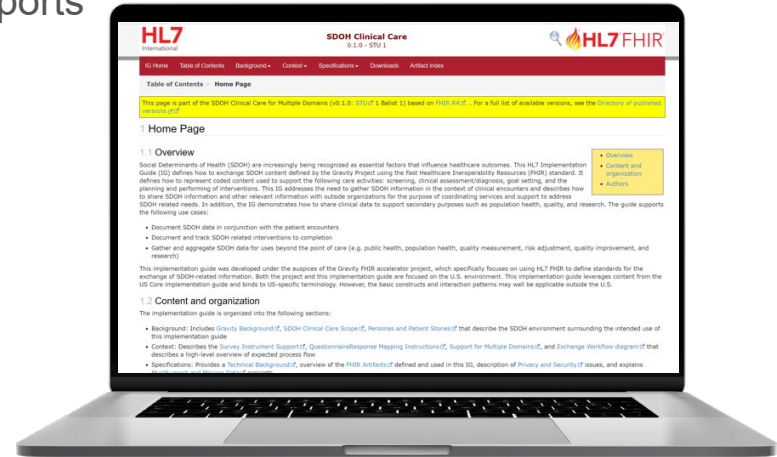
Technical Workstream — Scope

HL7 SDOH Clinical Care FHIR Implementation Guide (IG)

1. This is a framework Implementation Guide (IG) and supports multiple SDOH domains.

1. IG support the following clinical activities:

- Assessments
- Health Concerns / Problems
- Goals
- Interventions including referrals
- Consent
- Aggregation for exchange/reporting
- Exchange with patient/client applications
- Draft specifications for race/ethnicity exchange



Click to access [Gravity SDOH Implementation Guide \(STU2\)](#)

3. Standard for Trial Use 2 (STU2) published November 2022!

Technical Workstream Accomplishments



Gravity SDOH Clinical Care FHIR Implementation Guide (IG) Standard for Trial Use v2 (STU2) publication in November 2022.

- Gravity Track at January 2023 HL7 Connectathon
- Successful integration of MITRE team into Technical Workstream/IG development
- Completed January 2023 ballot review of US Core 6 IG

Priorities: Widespread Adoption and Use of SDOH Clinical Care IG

- STU2 update to SDOH CC IG with focus on making implementation easier and more accessible to all stakeholders.
- Providing technical support to Gravity Pilot Affinity Group to gain a practical understanding about what is working and not working with the IG in the real-world.

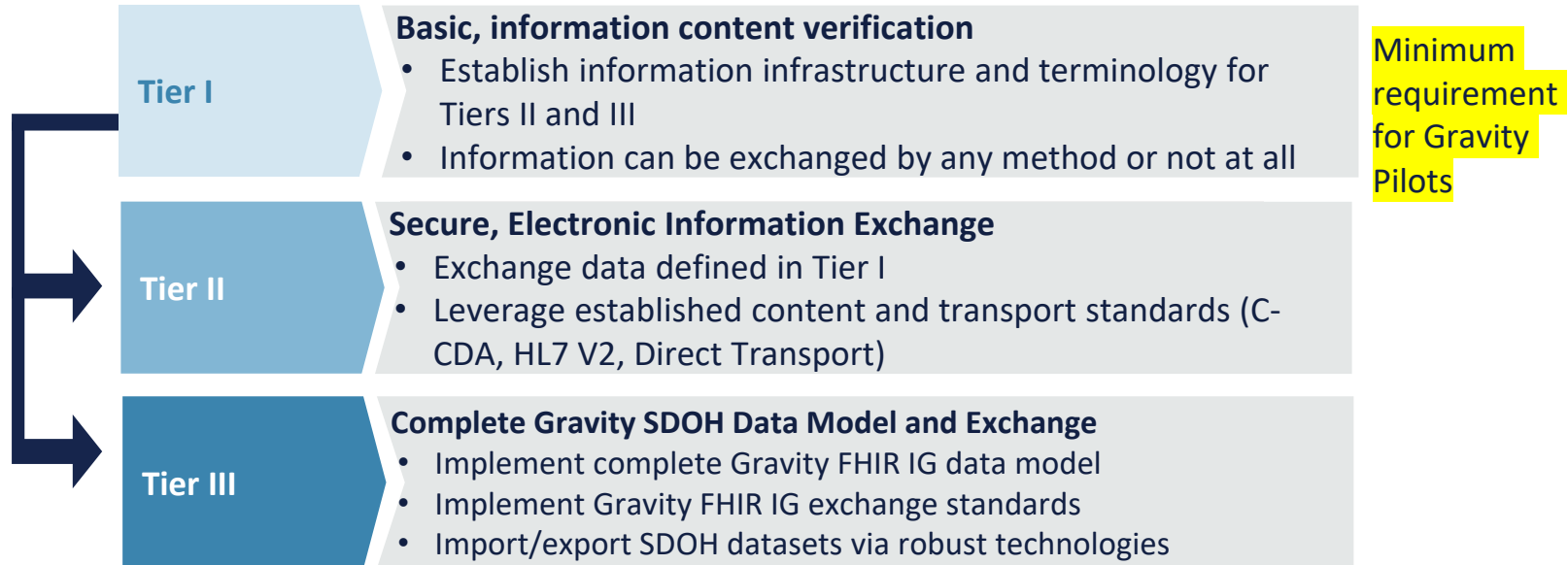
Pilot Workstream — Scope

- The goal of the Pilot Workstream is to drive implementation of Gravity Project terminology and technical standards and evaluate these standards for continuous improvement.
 - Gravity Pilots Affinity Group:
A peer-to-peer learning forum for entities participating in the real-world testing of Gravity standards.
 - Supported Pilots: Intentional relationships offering technical assistance to pilot teams and direct feedback on Gravity deliverables.



Three-Tiered Piloting Approach

Incremental approach for testing Gravity terminology and technical standards. Entities may participate at any Tier.



Phase 1 Supported Pilots



Pilot Team	TIER	Pilot Use Case	Funding Source
The University of Texas at Austin	III	Track social care interventions to completion.	ONC Leap in HIT
OCHIN	III	Track social care interventions to completion.	ONC/HL7 Cooperative Agreement
Alliance Chicago	III	Test a FHIR-enabled exchange of SDOH data, using FHIR Observation profiles.	ONC/HL7 Cooperative Agreement
DC CoRIE	II	Make Community Resource Inventory to enable Z-code-based search for community resource referral.	DC Department of Health Care Finance (DHCF)
FHIR-FLI Team (MayJuun and Open City Labs)	II	Social care referrals leveraging diverse standards (Gravity, Human Services Data Specification (HSDS), 211 LA).	ACL Social Care Referrals Challenge
ThriveHub (SC Thrive and Protech Solutions)	II	Social care referrals leveraging diverse standards (Gravity, HSDS, 211 LA).	ACL Social Care Referrals Challenge
Missouri Aging Services Data Collaborative	II	Develop an interoperability hub to facilitate information sharing between organizations, systems, and platforms.	ACL Social Referrals Challenge Final Winners
United Way for Southeastern Michigan	II	Develop a CIE data hub for bi-directional information exchange and exchange of social referral data for enrollment into state benefits.	ACL Social Referrals Challenge (<u>Phase 2 Awardee</u>)

Phase 2 Supported Pilots



Focus: Tier 2 Public Health/ Health Equity Pilots
Funded by Robert Wood Johnson in partnership with CIVITAS Networks for Health

Pilot Lead / Setting	TIER	Pilot Use Case
Bronx RHIO / New York State	II	Statewide standardized social risk screening and exchange
MyHealth Access Network / Oklahoma State	II	Statewide standardized social risk screening and exchange
University of Colorado Hospital / Denver Metro Area	II	Emergency Department social risk screening/ diagnosis, with community exchange and intervention
Pima County Department of Public Health & Southwest Tribe / Pima County Arizona	II	Public Health to Tribal Entity data exchange within the State communicable disease surveillance system

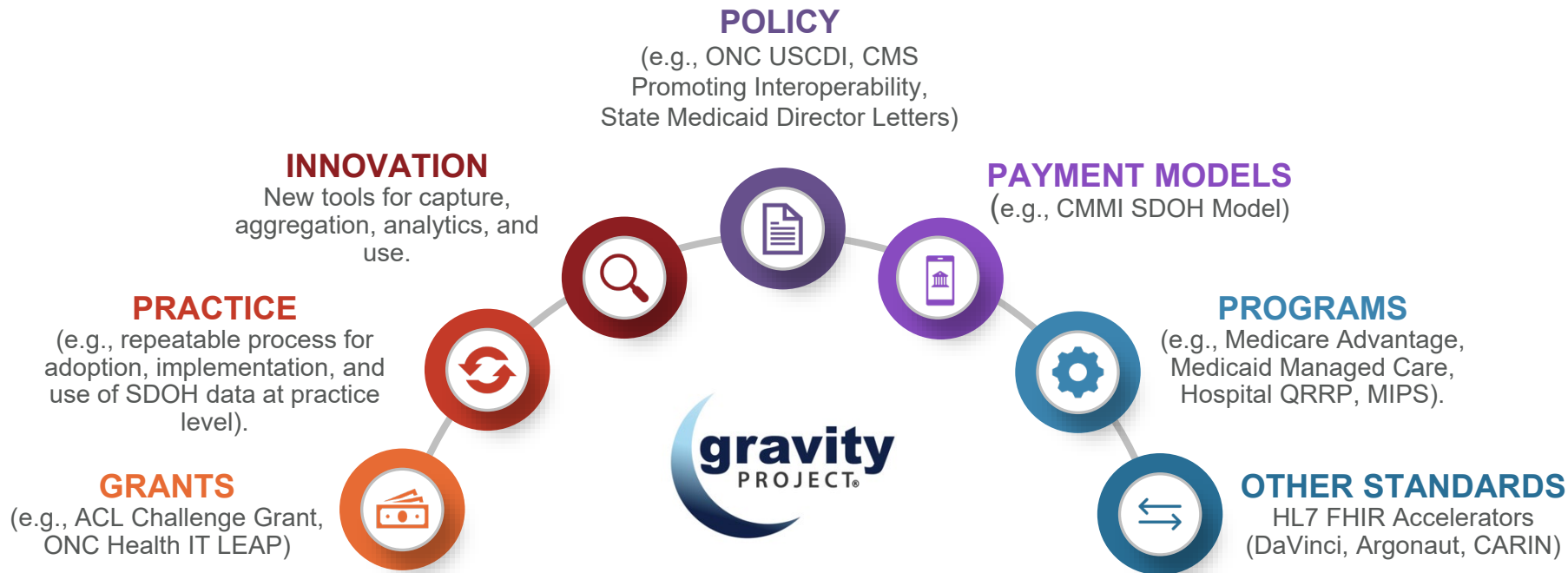
Gravity Pilot Sites



This is a sample (not all-inclusive list) of organizations that have participated in the Gravity Pilots Affinity Group.
We are grateful to all organizations adopting the work of Gravity to advance SDOH standards

Success Factors

Integration of Data Standards Into...



How to Engage



Gravity convenes participants from across the health and human services ecosystem via the following virtual meetings:

1. Terminology Workstream: **Bi-weekly** Public Collaborative meetings **2nd and 4th Thursday 4 to 5:30 pm ET** (Starting May 11th)
2. Technical Workstream: **Bi-weekly** Implementation Guide/Connectathon Work Group meetings **Wednesdays from 3 to 4:00 pm ET**
3. Pilots Workstream: **Monthly** Pilots Affinity Group meetings - **Last Thursday each month 2:30 to 4:00 pm ET**

View the HL7 calendar for meeting details: <https://www.hl7.org/concalls/>



Become a Member as a Gravity Project sponsor!

<https://thegravityproject.net/sponsors/>

Learn more!



Visit us at:

Gravity Website:

<https://thegravityproject.net/>

Gravity Confluence Page:

<https://confluence.hl7.org/display/GRAV/The+Gravity+Project>

Help us with Gravity Education & Outreach

Use Social Media handles to share or tag us to relevant information:



[@thegravityproj](https://twitter.com/thegravityproj)



<https://www.linkedin.com/company/gravity-project>